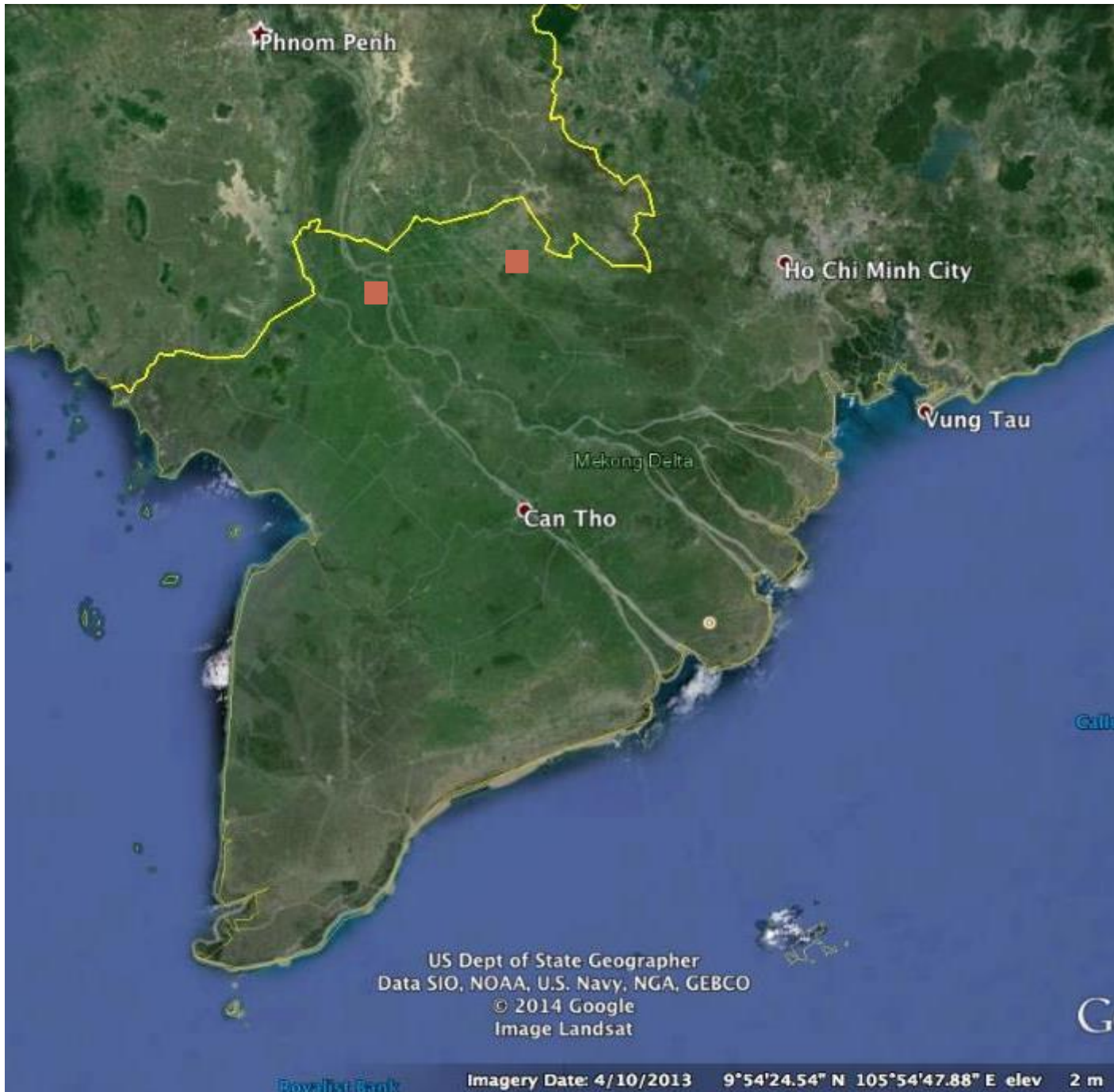


**LIVING WITH FLOODS:
PLANNED RELOCATION IN THE
MEKONG DELTA, VIETNAM**

Jane M Chun

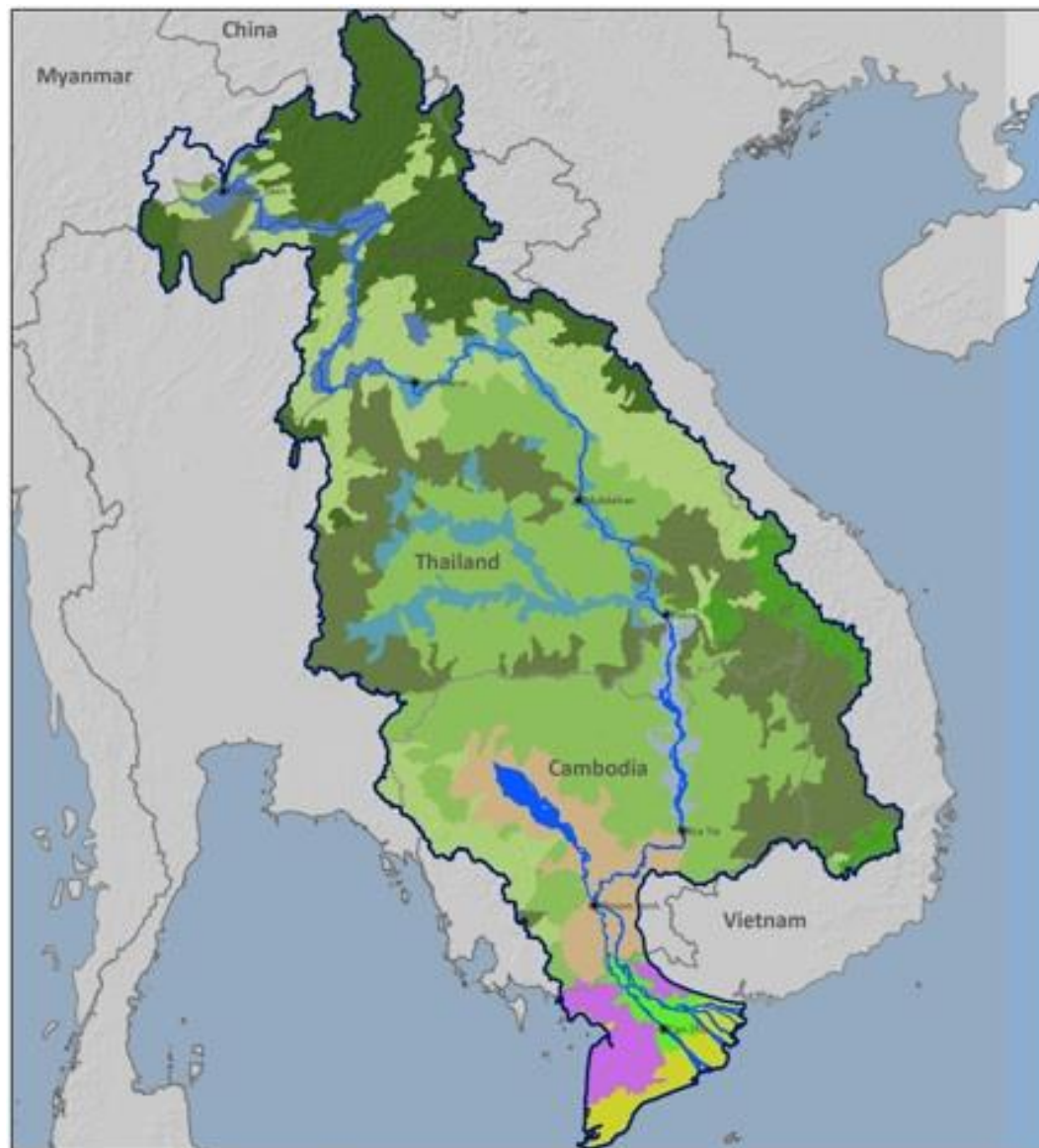


MEKONG DELTA

RURAL

VINH TRI,
LONG AN
PROVINCE

LONG THUAN,
DONG THAP
PROVINCE



ECOZONES IN THE LOWER MEKONG BASIN

- | | | |
|-----------------|---|---|
| National border | High-elevation moist broadleaf forest Annamites | Mid floodplain, wetland, lake (Vientiane to Pakse) |
| LMB boundary | High-elevation moist broadleaf forest North Indochina | Lower floodplain, wetland, lake (Pakse to Kratie) |
| Water body | Mid-elevation dry broadleaf forest | Tonle Sap swamp forest & lower floodplain (Kratie to delta) |
| Wetland site | Low-elevation dry broadleaf forest | Delta freshwater wetlands |
| | Low-elevation moist broadleaf forest | Delta acidic swamp forest |
| | Upper floodplain wetland, lake (Chiang Saen to Vientiane) | Delta mangroves and coastal wetlands |



icem
 Data source: ICM 2011, WWF 2002 2006, MRC GIS Database

MEKONG BASIN

SAMPLE

	Rural non-resettled	Rural resettled	Urban migrant	Total
In-depth interview	18 9 VT 9 LT	36 18 VT 18 LT	18 9 CTC 9 HCMC	72
Focus group discussion	4 2 VT 2 LT	6 4 VT 2 LT	4 2 CTC 2 HCMC	14
Semi-structured questionnaire (UNDP)	188 100 VT 88 LT	200 100 VT 100 LT	200 100 CTC 100 HCMC	588

FINDINGS & WORKING GROUP TOPICS

- 1.** The planning process: decisions about relocation and community participation
- 2.** Establishing the legal and institutional framework for Planned Relocation
- 3.** Developing and implementing the Relocation Plan

PLANNING PROCESS

Decisions
about
relocation &
community
participation

PLANNING PROCESS

1. Community's perception of risk
– what is risky, what is not –
should inform risk assessment
2. 'Community' is not homogenous
3. Role of private sector
4. Environmental impact of
relocation program
5. Consider other forms of mobility
as alternative



**ESTABLISHING LEGAL &
INSTITUTIONAL
FRAMEWORK**

LEGAL & INSTITUTIONAL FRAMEWORK

- 1.** Third party dispute resolution mechanism should be familiar with local power dynamics
- 2.** Health services – include mental health services where possible

LEGAL & INSTITUTIONAL FRAMEWORK

National Strategy for Natural Disaster Prevention, Response & Mitigation to 2020

‘Complete the relocation, arrangement and stabilization of the life for people in disaster prone areas according to the planning approved by authorized government agencies. Up to 2010, manage to relocate all populations from flash flood and landslide high-risk areas and dangerous areas to safe places.’

**DEVELOPING &
IMPLEMENTING
RELOCATION PLAN**

DEVELOPING & IMPLEMENTING PLAN

1. Is it useful to be more clear about what **MEANINGFUL** consultation & participation is?
2. Should the tool be more explicit about the needs & involvement of receiving communities?



Relocation site, Long Thuan province

DEVELOPING & IMPLEMENTING PLAN

3. What happens to individuals who choose to not participate?



THANK YOU